

### ◆ Features

- \* 1 LED flash circuit built in for sound output indication
- \* Trigger mode fixed on level hold type
- \* 6 siren sounds to be playing from 6 independence trigger keys ( K1 , K2 , K3 , K4 , K5 , K6 pin )
- \* Lower power consumption in IC body

PIN	SOUND LIST
K1	Police Car 1
K2	Fire Engine
K3	Ambulance
K4	O,O,O,O .....Alarm
K5	Ki,Ki,Ki,Ki.....Alarm
K6	Police Car 1

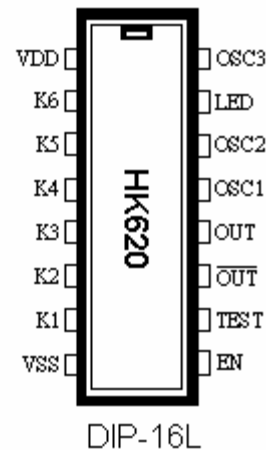
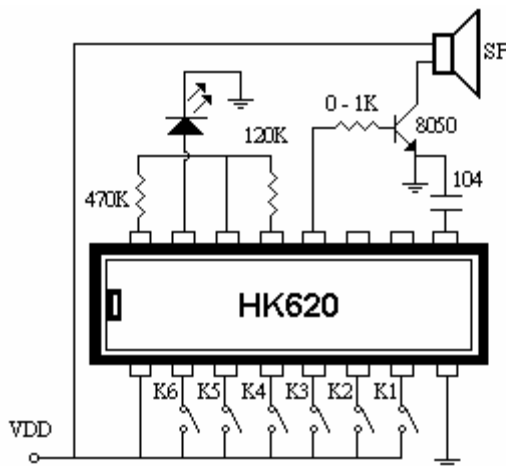
### ◆ Application

Security system, Home appliance, TV game, Alarm system

### ◆ Electrical Characteristics

Characteristics	Sym.	Min.	Typ.	Max.	Unit	Remark
Operating voltage	V <sub>DD</sub>	1.8	3	4.8	V	
Operating current	I <sub>OP</sub>	----	0.1	0.5	mA	No Load
Stand by current	I <sub>SB</sub>	----	1	10	uA	
Oscillator frequency	F <sub>OSC</sub>	----	108	----	KHz	±30% R <sub>osc</sub> = 120KΩ
Operating temperature	T <sub>EMP</sub>	0	25	60	°C	
Driving current	I <sub>O</sub>	1	----	----	mA	@ V <sub>DS</sub> =1V

### ◆ Application circuit



★ Package Type : DIP-16L

★ Trigger Mode and Timing Chart :

