

◆ Features

- * Built adjustable oscillator in IC body
- * Built in power on reset and A/D & D/A circuit
- * Built in 45K bits SRAM for delay control
- * Adjustable delay time setting between 30 ms ~ 700ms for Echo mode or Surround mode
- * Lower operation current

◆ Application

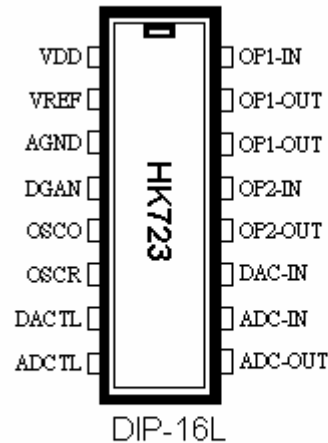
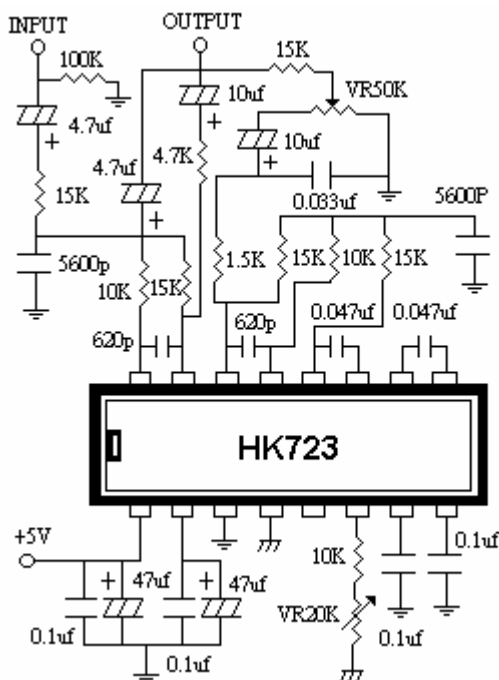
VCD player, KARAOK, TV, Audio system, Car stereo

◆ Electrical Characteristics

Characteristics	Sym.	Min.	Typ.	Max.	Unit	Remark
Operating voltage	V _{DD}	4.5	5.0	5.5	V	
Operating current	I _{OP}	----	10	20	mA	
“ H ” input voltage	V _{IH}	0.7	---	----	V	
“ L ” input voltage	V _{IL}	----	----	0.3	V	
Operating temperature	T _{EMP}	0	25	60	°C	
Driving current	I _O	----	15	25	mA	

◆ Application circuit

(A) Echo Mode

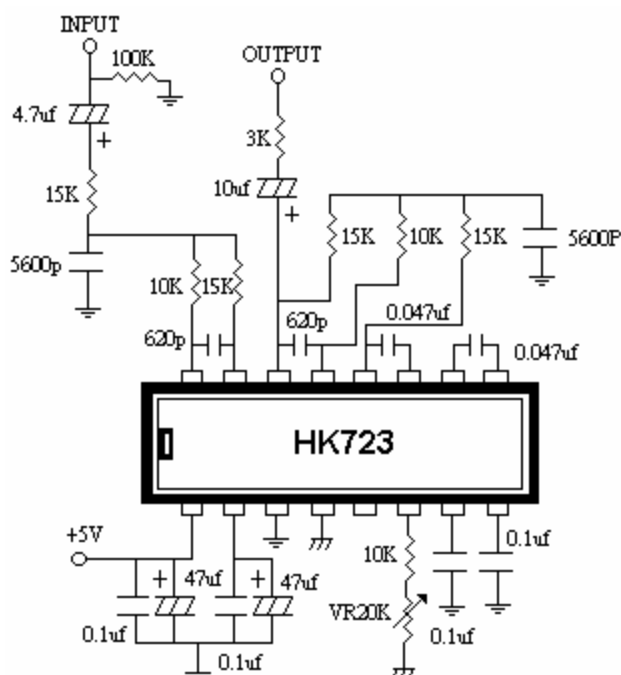


- ※ The resistor value of pin 6 be approximate 1K ~ 160K
- ※ ⊥ Represent analog ground (power ground)
- ※ ≡ Represent digital signal ground

★ PACKAGE TYPE : DIP-16L

◆ Application circuit II

(B) Surround Mode



(C) Microphone pre-amplifier circuit

