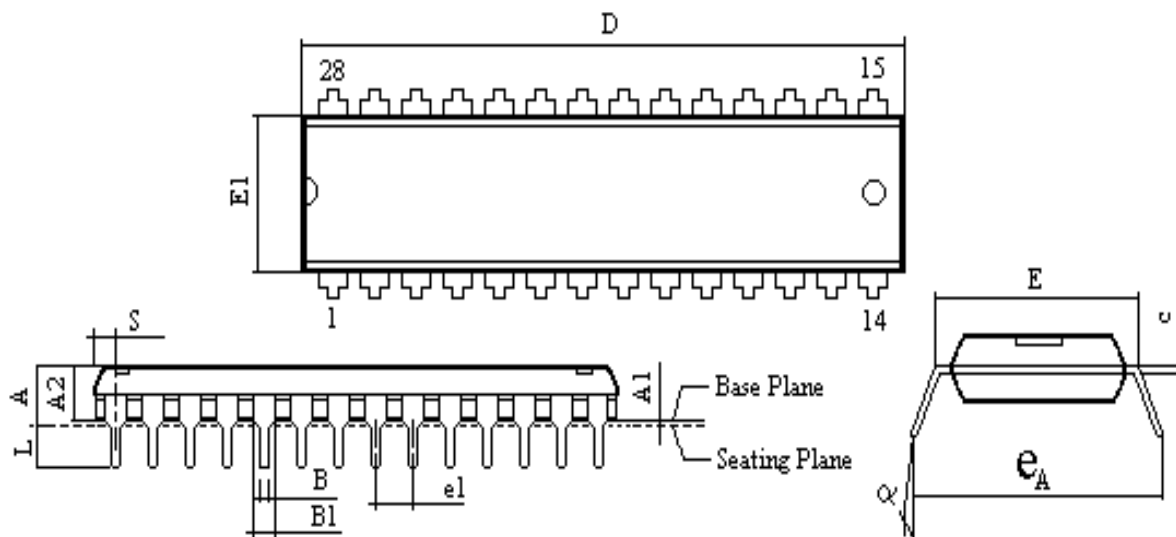


DIP-28L Outline Dimensions

Unit : inches / mm



Symbol	Dimensions in inches	Dimensions in mm
A	0.210 Max.	5.33 Max.
A1	0.010 Min.	0.25 Min.
A2	0.155 ±0.010	3.94 ±0.25
B	+0.004 0.018 -0.002	+0.10 0.46 -0.05
B1	+0.004 0.060 -0.002	+0.10 1.52 -0.05
C	+0.004 0.010 -0.002	+0.10 0.25 -0.05
D	1.460 Typ. (1.480 Max.)	37.08 Typ. (37.59 Max.)
E	0.600 ±0.010	15.24 ±0.25
E1	0.550 Typ. (0.562 Max.)	13.97 Typ. (14.27 Max..)
e1	0.100 ±0.010	2.54 ±0.25
L	0.130 ±0.010	3.30 ±0.25
α	0° ~ 15°	0° ~ 15°
e _A	0.650 ±0.020	16.51 ±0.51
S	0.090 Max.	2.29 Max.

Notes:

1. The maximum value of dimension D includes end flash.
2. Dimension E1 does not include resin fins.
3. Dimension S includes end flash.
4. All dimensions are based on the British system.